

EMERGENCY ORDINANCE NO. 2021-31

AN ORDINANCE APPROVING A FINAL PLAT FOR SECTION 2, BLOCK A, OF THE TRAILS OF TODHUNTER CONSERVATION SUBDIVISION AND DECLARING AN EMERGENCY

WHEREAS, the Trails of Todhunter LLC has submitted a final plat for construction of Section 5, Block A, of the Todhunter Conservation Subdivision; and

WHEREAS, the Planning Commission gave a favorable recommendation on the approval of the final plat described herein on July 20, 2021, contingent on the completion of certain conditions.

NOW, THEREFORE, BE IT ORDAINED BY THE COUNCIL OF THE CITY OF MONROE, STATE OF OHIO, THAT:

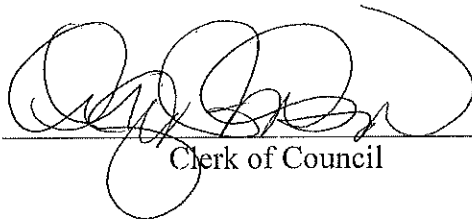
SECTION 1: The Council of the City of Monroe hereby approves the final plat of Section 2, Block A, of the Trails of Todhunter Conservation Subdivision upon receipt of proper bonding, payment of all application review and inspection fees, submission of digital files compatible with the City's GIS, and satisfaction of staff comments.

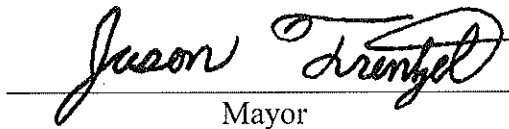
SECTION 2: This measure is hereby declared to be an emergency measure necessary for the immediate preservation of the public peace, health, safety and welfare and further for the reason that Council desires to approve the final plat at the earliest possible date to allow for lot sales to occur. Therefore, this measure shall take effect and be in full force from and after its passage.

PASSED: August 24, 2021

ATTEST:

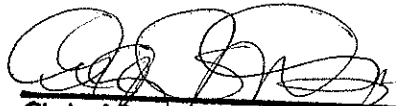
APPROVED:

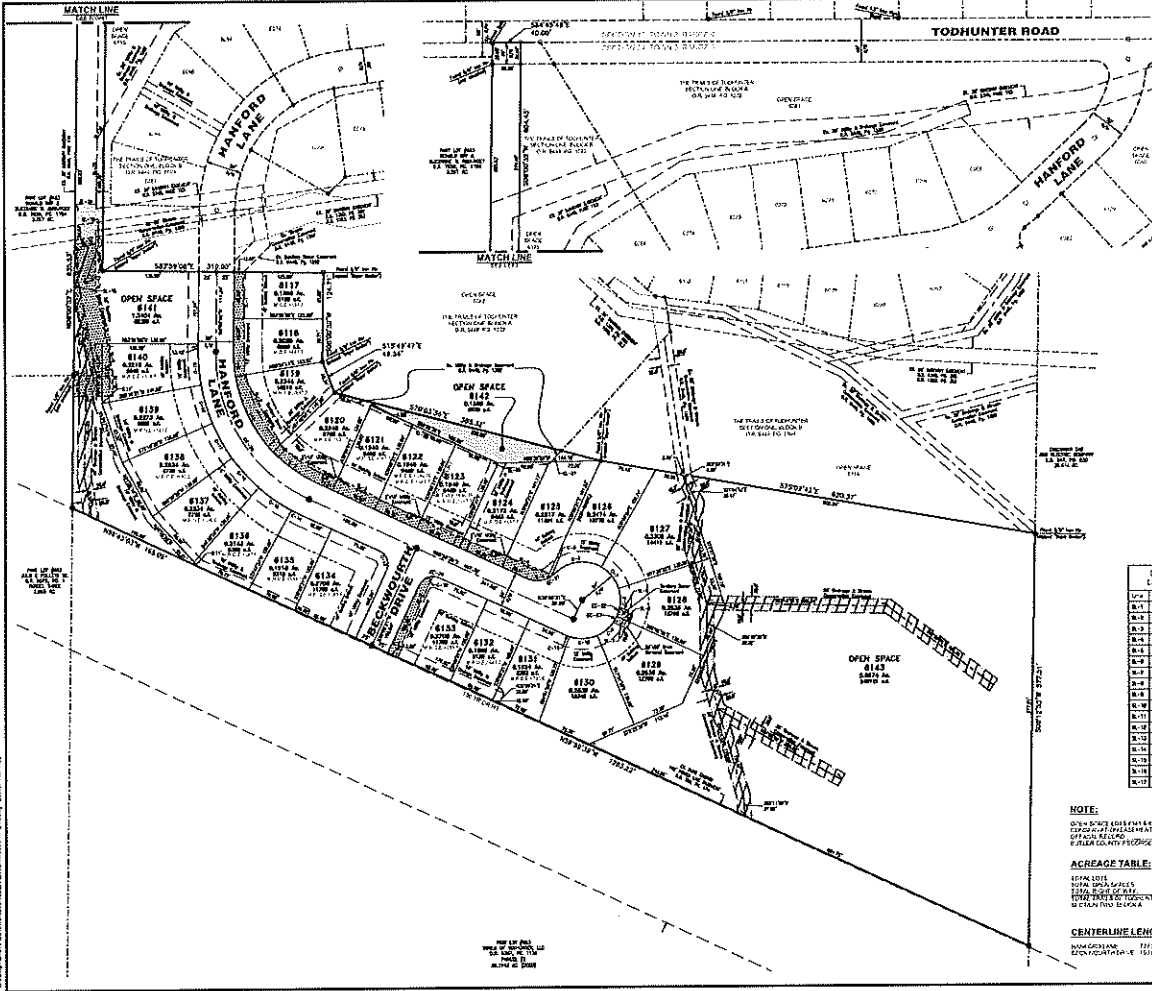

Clerk of Council


Mayor

"I, the undersigned Clerk of Council of the city of Monroe, Ohio, hereby certify the foregoing (ordinance or resolution) was published as required by Section 7.16 of the Charter of the City of Monroe.

This legislation was enacted in an open meeting pursuant to the terms and provisions of the Sunshine Law, Section 121.22 of the Ohio Revised Code.


Clerk of Council
City of Monroe, Ohio



LOT CURVE TABLE

Curve	Data	Radius	Length	Chord
C-1	8120	200.00	20.00	39.63
C-2	8121	200.00	20.00	39.63
C-3	8122	200.00	20.00	39.63
C-4	8123	200.00	20.00	39.63
C-5	8124	200.00	20.00	39.63
C-6	8125	200.00	20.00	39.63
C-7	8126	200.00	20.00	39.63
C-8	8127	200.00	20.00	39.63
C-9	8128	200.00	20.00	39.63
C-10	8129	200.00	20.00	39.63
C-11	8130	200.00	20.00	39.63
C-12	8131	200.00	20.00	39.63
C-13	8132	200.00	20.00	39.63
C-14	8133	200.00	20.00	39.63
C-15	8134	200.00	20.00	39.63
C-16	8135	200.00	20.00	39.63
C-17	8136	200.00	20.00	39.63
C-18	8137	200.00	20.00	39.63
C-19	8138	200.00	20.00	39.63

CENTERLINE CURVE TABLE

Curve	Data	Radius	Length	Chord
C-1	8120	200.00	20.00	39.63
C-2	8121	200.00	20.00	39.63
C-3	8122	200.00	20.00	39.63
C-4	8123	200.00	20.00	39.63
C-5	8124	200.00	20.00	39.63
C-6	8125	200.00	20.00	39.63
C-7	8126	200.00	20.00	39.63
C-8	8127	200.00	20.00	39.63
C-9	8128	200.00	20.00	39.63
C-10	8129	200.00	20.00	39.63
C-11	8130	200.00	20.00	39.63
C-12	8131	200.00	20.00	39.63
C-13	8132	200.00	20.00	39.63
C-14	8133	200.00	20.00	39.63
C-15	8134	200.00	20.00	39.63
C-16	8135	200.00	20.00	39.63
C-17	8136	200.00	20.00	39.63
C-18	8137	200.00	20.00	39.63
C-19	8138	200.00	20.00	39.63

EASEMENT CURVE TABLE

Curve	Data	Radius	Length	Chord
E-1	8120	200.00	20.00	39.63
E-2	8121	200.00	20.00	39.63
E-3	8122	200.00	20.00	39.63
E-4	8123	200.00	20.00	39.63
E-5	8124	200.00	20.00	39.63
E-6	8125	200.00	20.00	39.63
E-7	8126	200.00	20.00	39.63
E-8	8127	200.00	20.00	39.63
E-9	8128	200.00	20.00	39.63
E-10	8129	200.00	20.00	39.63
E-11	8130	200.00	20.00	39.63
E-12	8131	200.00	20.00	39.63
E-13	8132	200.00	20.00	39.63
E-14	8133	200.00	20.00	39.63
E-15	8134	200.00	20.00	39.63
E-16	8135	200.00	20.00	39.63
E-17	8136	200.00	20.00	39.63
E-18	8137	200.00	20.00	39.63
E-19	8138	200.00	20.00	39.63

SANITARY EASEMENT TABLE

Lot	Condition	Width	Depth
8120	Sanitary	5.00	5.00
8121	Sanitary	5.00	5.00
8122	Sanitary	5.00	5.00
8123	Sanitary	5.00	5.00
8124	Sanitary	5.00	5.00
8125	Sanitary	5.00	5.00
8126	Sanitary	5.00	5.00
8127	Sanitary	5.00	5.00
8128	Sanitary	5.00	5.00
8129	Sanitary	5.00	5.00
8130	Sanitary	5.00	5.00
8131	Sanitary	5.00	5.00
8132	Sanitary	5.00	5.00
8133	Sanitary	5.00	5.00
8134	Sanitary	5.00	5.00
8135	Sanitary	5.00	5.00
8136	Sanitary	5.00	5.00
8137	Sanitary	5.00	5.00
8138	Sanitary	5.00	5.00

EASEMENT LINE TABLE

Lot	Condition	Width	Depth
8120	Sanitary	5.00	5.00
8121	Sanitary	5.00	5.00
8122	Sanitary	5.00	5.00
8123	Sanitary	5.00	5.00
8124	Sanitary	5.00	5.00
8125	Sanitary	5.00	5.00
8126	Sanitary	5.00	5.00
8127	Sanitary	5.00	5.00
8128	Sanitary	5.00	5.00
8129	Sanitary	5.00	5.00
8130	Sanitary	5.00	5.00
8131	Sanitary	5.00	5.00
8132	Sanitary	5.00	5.00
8133	Sanitary	5.00	5.00
8134	Sanitary	5.00	5.00
8135	Sanitary	5.00	5.00
8136	Sanitary	5.00	5.00
8137	Sanitary	5.00	5.00
8138	Sanitary	5.00	5.00

NOTE:
 THIS PLAN SHOWS THE LOCATION AND SUBJECT TO A RECORD EASEMENT AS SHOWN BY THE DASHED LINES. THE EASEMENT IS TO BE USED FOR THE PURPOSES OF THE PROJECT.

AGREEMENT TABLE:
 8120-8138: 200.00' RADIUS
 8120-8138: 20.00' LENGTH

CENTERLINE LENGTHS:
 8120-8138: 39.63'

LEGEND:
 - 1" = 10' SCALE
 - 1" = 10' SCALE
 - 1" = 10' SCALE



RECORD PLAT

Block	Section	Area	Volume
2	10	100	100
2	11	100	100
2	12	100	100
2	13	100	100
2	14	100	100
2	15	100	100
2	16	100	100
2	17	100	100
2	18	100	100
2	19	100	100
2	20	100	100

THE TRAILS OF TODHUNTER SECTION TWO, BLOCK A

RECORD PLAT



DATE: 11/20/2013
 TIME: 10:30 AM
 DRAWN BY: J. J. JONES
 CHECKED BY: J. J. JONES
 APPROVED BY: J. J. JONES